

# TECHNICAL CORNER

**Yanuar Pribadi**  
 yanuar.pribadi@ipc.co.id  
 +62-21-5793 1168

11 Februari 2010

IHSG hari ini kami prediksi akan bergerak sideways seiring dengan pergerakan regional. IHSG perlu menembus resistance kuat 2510 agar dapat mencapai 2530-2540 kembali.

## BDMN (4675)

**Rekomendasi: BUY**

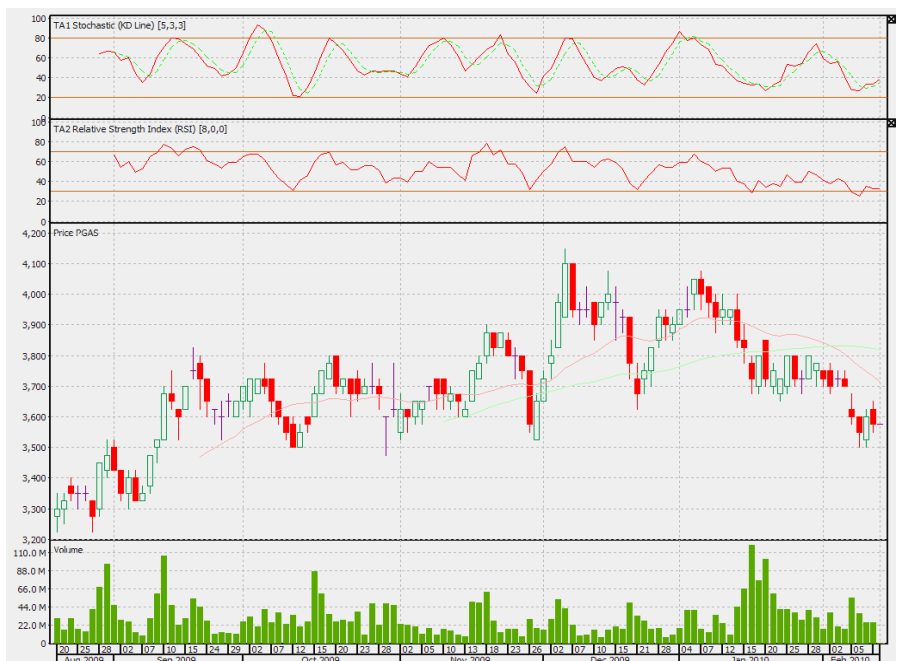
- Menembus moving average 55 di 4600 ;
- Beli di level 4650-4675, stop loss di bawah 4600, target di 4750-4775 ;



## PGAS (3575)

**Rekomendasi: BUY**

- Support 3500-3525 cukup kuat ;
- Beli di level 3550-3575, stop loss di bawah 3500, target di 3675-3700 ;



# TECHNICAL CORNER

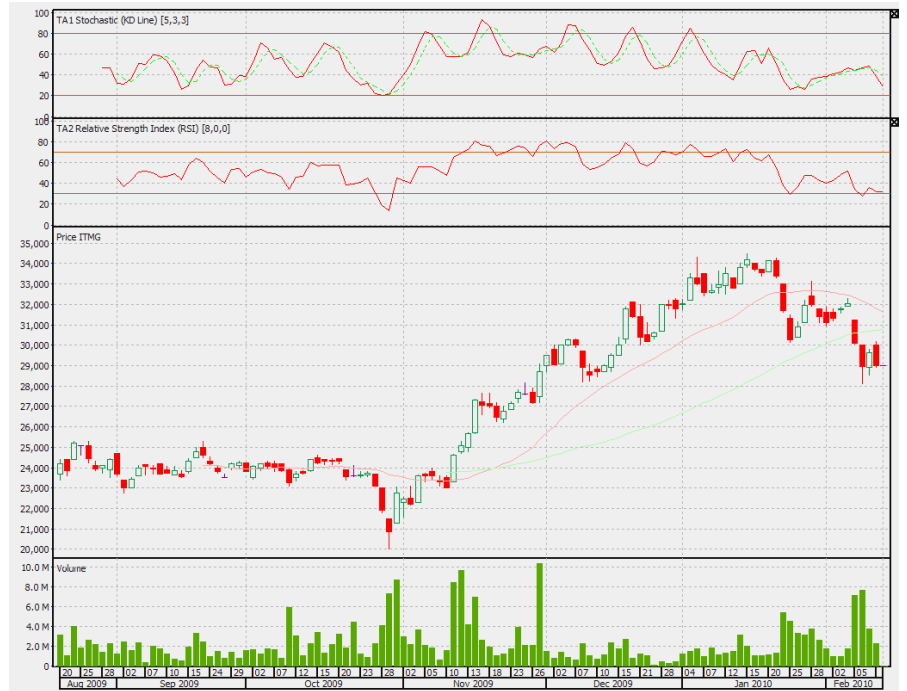
**Yanuar Pribadi**  
 yanuar.pribadi@ipc.co.id  
 +62-21-5793 1168

11 Februari 2010

## ITMG (29000)

**Rekomendasi: SELL**

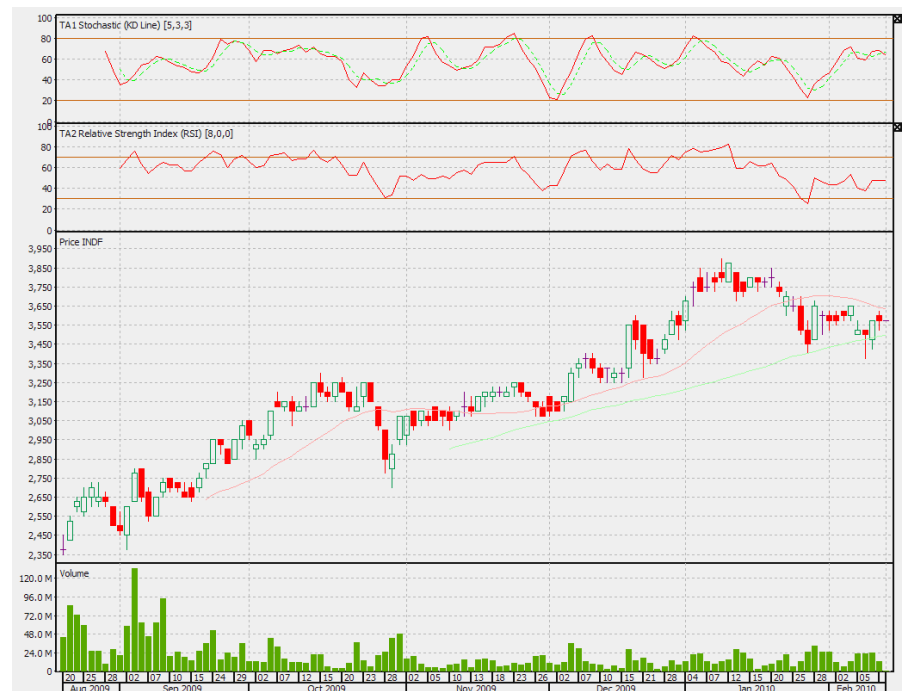
---Candlestick bearish dengan target 28200 ;  
 ---Jual di level 28900-29000, stop loss di atas 29500 ;



## INDF (3575)

**Rekomendasi: BUY**

---Grafik mingguan menunjukkan potensi penguatan ;  
 ---Beli di level 3525-3550, stop loss di bawah 3500, target di 3650-3675 ;



## PT INDO PREMIER SECURITIES

Wisma GKBI 7th Floor Suite 718, Jl. Jenderal Sudirman Kav.28, Jakarta 10210  
Tel. (62-21) 5793 1168, Fax. (62-21) 5793 1167

### Research Team

Lily Sentosa	Head of Research	<a href="mailto:lily.sentosa@ipc.co.id">lily.sentosa@ipc.co.id</a>
Dang Maulida	Telco, Coal	<a href="mailto:dang.maulida@ipc.co.id">dang.maulida@ipc.co.id</a>
Yanuar Pribadi	Heavy Equipment, Plantation, Technical	<a href="mailto:yanuar.pribadi@ipc.co.id">yanuar.pribadi@ipc.co.id</a>
Jundianto Alim	Property, Energy, Mining	<a href="mailto:jundianto.alim@ipc.co.id">jundianto.alim@ipc.co.id</a>
Th. Ariel Kristian	Cement, Retail, Shipping	<a href="mailto:theodorus.ariel@ipc.co.id">theodorus.ariel@ipc.co.id</a>
A.G. Pahlevi	Banking, Construction	<a href="mailto:agpahlevi@ipc.co.id">agpahlevi@ipc.co.id</a>
Seto Wardono	Senior Economist	<a href="mailto:seto.wardono@ipc.co.id">seto.wardono@ipc.co.id</a>
Myrdal Gunarto	Economist	<a href="mailto:myrdal.gunarto@ipc.co.id">myrdal.gunarto@ipc.co.id</a>
Bisma	Research Support	<a href="mailto:bisma@ipc.co.id">bisma@ipc.co.id</a>

### Branch Office

Boulevard Artha Gading Blok A7A No. 3  
Kelapa Gading, Jakarta Utara  
Tel. (021) 4587 4168  
Fax. (021) 4587 4167

Graha International Lantai 1  
Jl. Asia Afrika 129 Bandung - 40112  
Tel. (022) 422 1758  
Fax. (022) 422 1778

Wisma Dharmala Surabaya Lantai Mezzanine  
Jl. Panglima Sudirman 101-103 Surabaya - 60271  
Tel. (031) 548 7050  
Fax. (031) 548 7051

Jl. Sultan Agung No.104-106  
Semarang 50232  
Tel. (024) 850 5961  
Fax. (024) 850 5962

Jl. Sulawesi No. 88  
Makassar 90174  
Tel. (0411) 333 168  
Fax. (0411) 333 167

Gedung Uniplaza Lt.3 West Tower  
Jl. M.T. Haryono No. A-1 Medan  
Tel. (061) 455 0168  
Fax. (061) 455 2371

JL. Urip Sumoharjo No 29 B  
Solo - 57129  
Tel . (0271) 661 196  
Fax . (0271) 633 469

Ruko ITC BSD Lt.1 No 30,  
Jl Pahlawan Seribu  
Serpong - Tangerang  
Tel. (021) 5315 6701

### DISCLAIMER

This document and any attachments are confidential and may also be privileged. If you are not the intended recipient of this document you must not directly or indirectly use, reproduce, distribute, disclose, print, reply on, disseminate, or copy any part of the document or its attachments and if you have received this document in error, please notify the sender immediately by return e-mail or delete it from your system.

All opinions & estimates contained in this document constitute our judgments as of this date, without regards to its fairness and are subject to change without notice. This document has been prepared for general information only, without regards to specific objectives, financial situation and needs of any particular person who may receive it. No Responsibility or liability whatsoever or however arising is accepted in relation to the contents hereof by any company mentioned herein, or any of their respective directors, officers or employees. This document is not an offer to sell or a solicitation to buy any securities. Indo Premier Securities, its affiliates and their officers and employees may have position, make markets, as principal or engage in transaction securities or related investment of any company mentioned herein, may perform services or solicit business from any company mentioned herein.